

Anti-CXCR1 Antibody
Catalog # ABO11386**Specification**

Anti-CXCR1 Antibody - Product Information

Application	WB, IHC-P
Primary Accession	P25024
Host	Rabbit
Reactivity	Human
Clonality	Polyclonal
Format	Lyophilized

Description

Rabbit IgG polyclonal antibody for C-X-C chemokine receptor type 1(CXCR1) detection. Tested with WB, IHC-P in Human.

Reconstitution

Add 0.2ml of distilled water will yield a concentration of 500ug/ml.

Anti-CXCR1 Antibody - Additional Information

Gene ID 3577

Other Names

C-X-C chemokine receptor type 1, CXC-R1, CXCR-1, CDw128a, High affinity interleukin-8 receptor A, IL-8R A, IL-8 receptor type 1, CD181, CXCR1, CMKAR1, IL8RA

Calculated MW

39791 MW KDa

Application Details

Immunohistochemistry(Paraffin-embedded Section), 0.5-1 µg/ml, Human, By Heat
Western blot, 0.1-0.5 µg/ml, Human

Subcellular Localization

Cell membrane; Multi-pass membrane protein.

Protein Name

C-X-C chemokine receptor type 1

Contents

Each vial contains 5mg BSA, 0.9mg NaCl, 0.2mg Na₂HPO₄, 0.05mg Thimerosal, 0.05mg NaN₃.

Immunogen

A synthetic peptide corresponding to a sequence at the N-terminus of human CXCR1(24-38aa DEDYSPCMLETETLN).

Purification

Immunogen affinity purified.

Cross Reactivity

No cross reactivity with other proteins

Storage

At -20°C for one year. After reconstitution, at 4°C for one month. It can also be aliquotted and stored frozen at -20°C for a longer time. Avoid repeated freezing and thawing.

Sequence Similarities

Belongs to the G-protein coupled receptor 1 family.

Anti-CXCR1 Antibody - Protein Information

Name CXCR1

Synonyms CMKAR1, IL8RA

Function

Receptor to interleukin-8, which is a powerful neutrophils chemotactic factor (PubMed:1840701). Binding of IL-8 to the receptor causes activation of neutrophils. This response is mediated via a G- protein that activates a phosphatidylinositol-calcium second messenger system (PubMed:8662698).

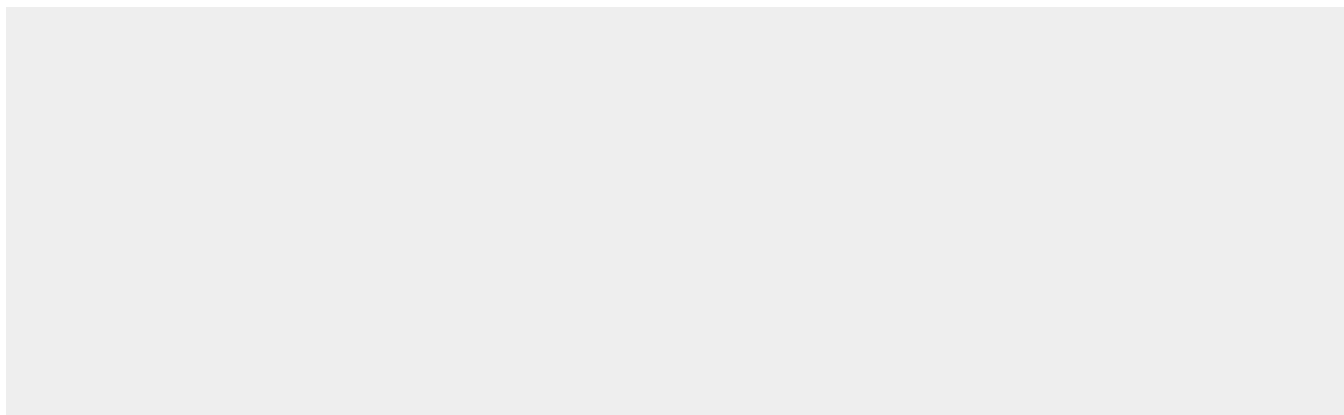
Cellular Location

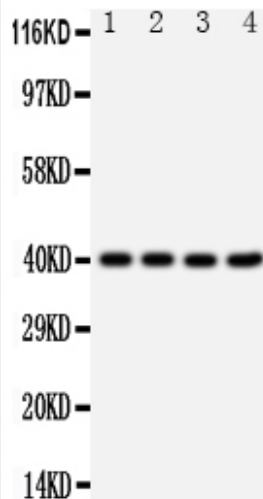
Cell membrane; Multi-pass membrane protein.

Anti-CXCR1 Antibody - Protocols

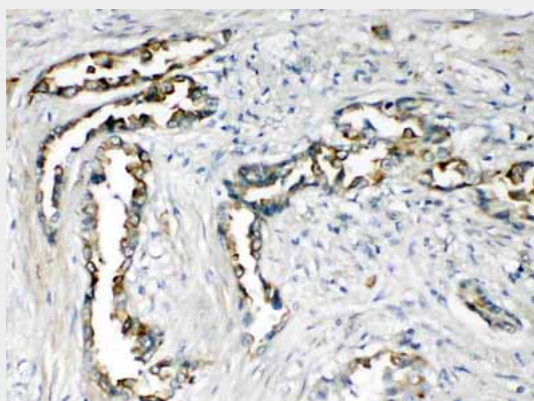
Provided below are standard protocols that you may find useful for product applications.

- [Western Blot](#)
- [Blocking Peptides](#)
- [Dot Blot](#)
- [Immunohistochemistry](#)
- [Immunofluorescence](#)
- [Immunoprecipitation](#)
- [Flow Cytometry](#)
- [Cell Culture](#)

Anti-CXCR1 Antibody - Images



Anti-CXCR1 antibody, ABO11386, Western blotting All lanes: Anti CXCR1 (ABO11386) at 0.5ug/ml
Lane 1: HELA Whole Cell Lysate at 40ug
Lane 2: COLO320 Whole Cell Lysate at 40ug
Lane 3: M231 Whole Cell Lysate at 40ug
Lane 4: HT1080 Whole Cell Lysate at 40ug
Predicted bind size: 40KD
Observed bind size: 40KD



Anti-CXCR1 antibody, ABO11386, IHC(P) IHC(P): Human Lung Cancer Tissue

Anti-CXCR1 Antibody - Background

CXCR1 (Chemokine, CXC Motif, Receptor 1), also known as IL8RA or IL8R1, is a chemokine receptor. IL8RA is its human gene. Morris et al. (1992) mapped the IL8RA gene to chromosome 2q35. Hartl et al. (2007) concluded that CXCR1 cleavage and its functional consequences represent an important pathophysiologic mechanism in CF and other neutrophilic airway diseases. Receptor to interleukin-8, which is a powerful neutrophils chemotactic factor. Binding of IL-8 to the receptor causes activation of neutrophils. This response is mediated via a G-protein that activates a phosphatidylinositol-calcium second messenger system. This receptor binds to IL-8 with a high affinity and to MGSA (GRO) with a low affinity.